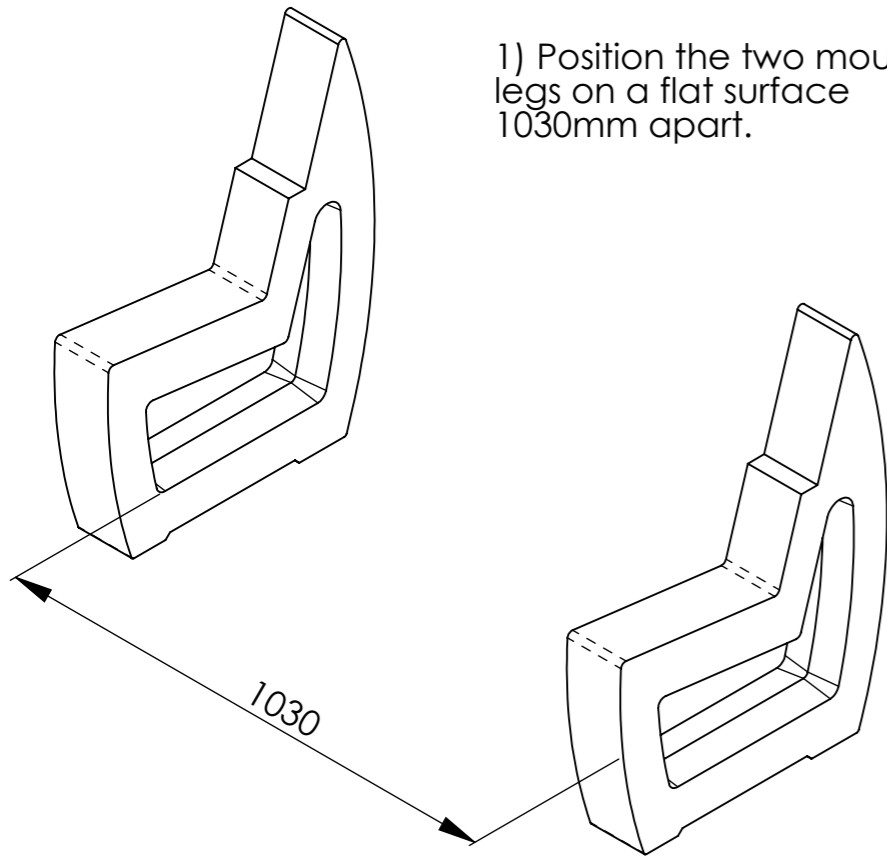
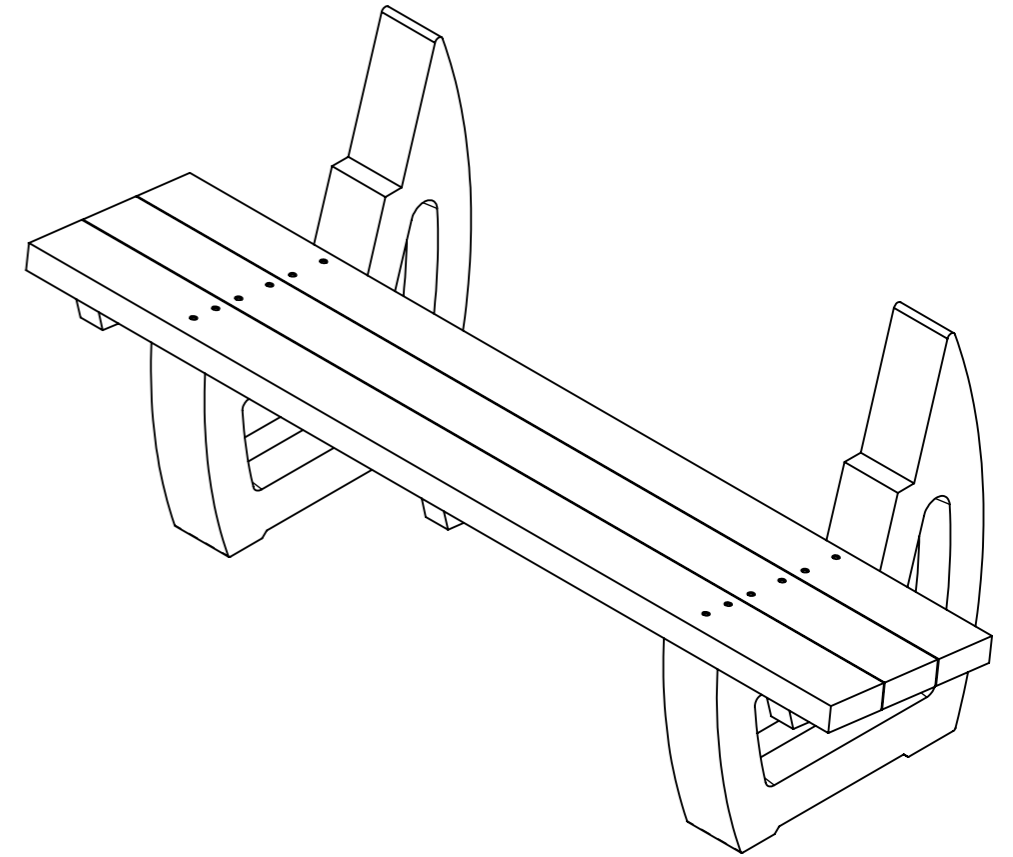


1) Position the two moulded legs on a flat surface 1030mm apart.

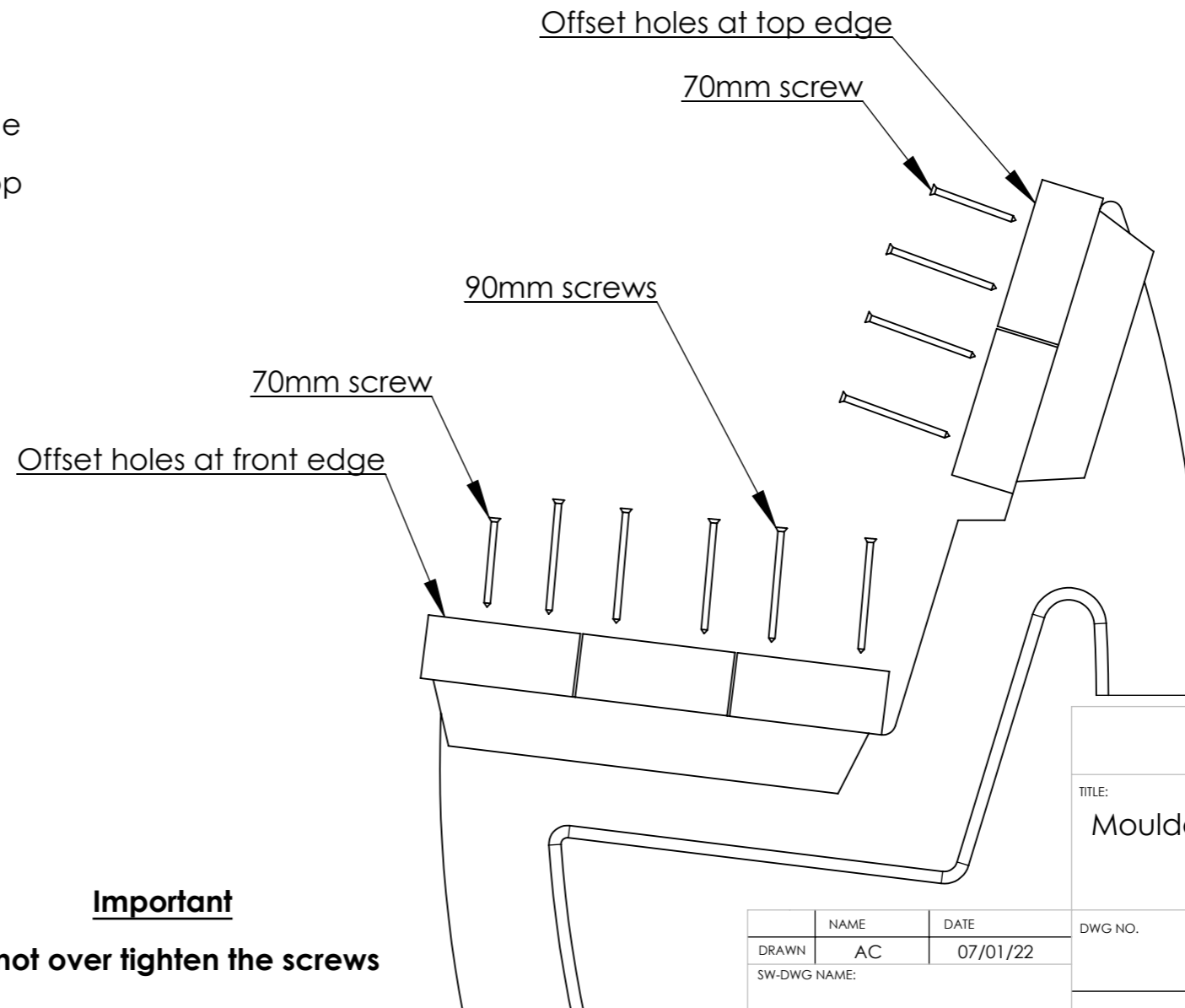
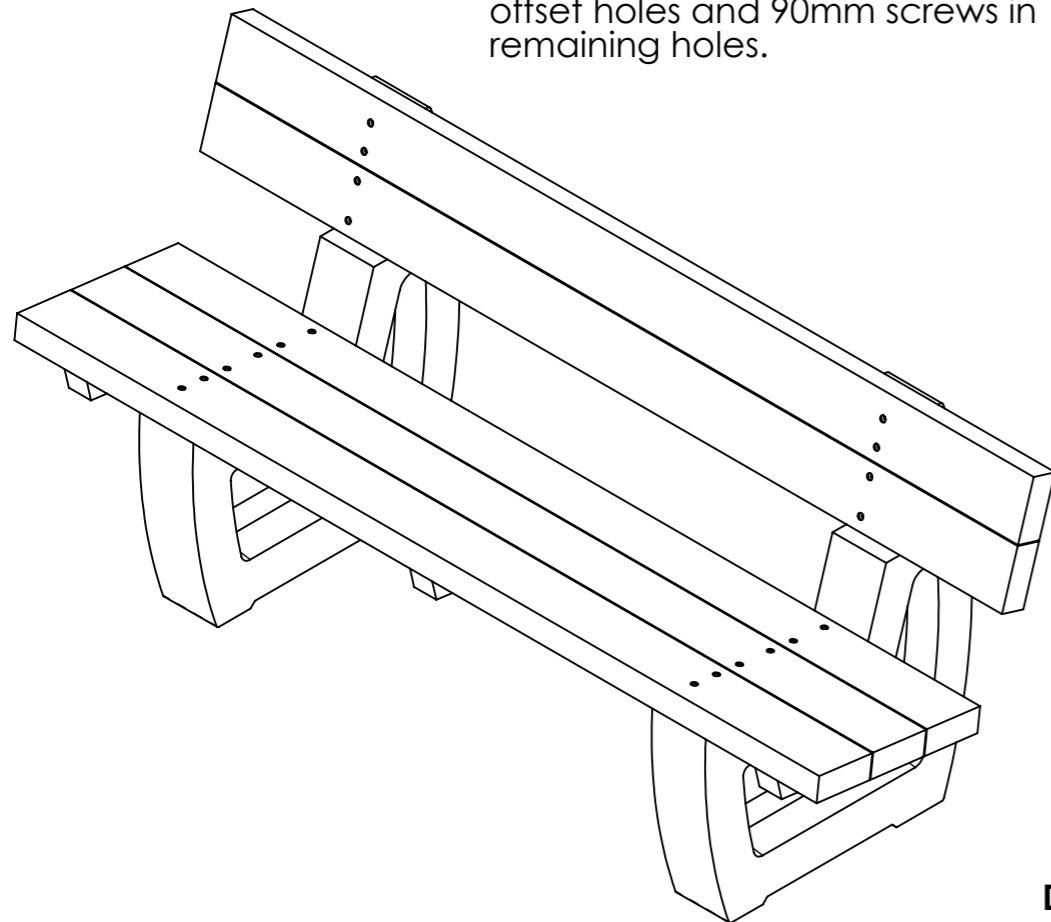


2) Lay the seat assembly on the legs. The screw holes must align with the centre line the leg. The seat assembly should overhang leg moulding by maximum of 10mm.

Secure using 2no. 70mm screws in the front offset holes and 90mm screws in the remaining holes.



3) Position the back slat assembly so that the top is level with the top edge of the leg moulding. Secure using 2no. 70mm screws in top offset holes and 90mm screws in remaining holes.



Important
Do not over tighten the screws

Earth Anchors Ltd

TITLE:
Moulded Seat Assembly Instructions

	NAME	DATE
DRAWN	AC	07/01/22
SW-DWG NAME:		

DWG NO. REVISION